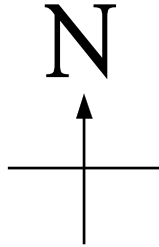


Rt. 287

Rt. 17

Rt. 208



Directions:

Take Rt 4 West to Rt 208. Look for second exit for Goffle Rd. that says "Goffle Road to Paterson". It goes under Rt 208, turn left at the first light onto Lafayette Ave.. Go about eight blocks to the first light at Rea Ave., make the left turn on Rea Ave. and then the first right onto Fourth Ave.. We are at the end of the street on the left.

Goffle Rd. (to Ridgewood)

Traffic Light

Goffle Rd. (to Paterson)

Traffic Light

Rea Ave.

4th Ave.

Lafayette Ave.

Rt. 208

Diamond Bridge Ave.

Rt. 17

Traffic Light

Hawthorne Rubber Mfg.

Corp. 35 Fourth Avenue
Hawthorne, NJ 07507-0171
973-427-3337 FAX 973-427-8233

Rt. 4

Rt. 4